

Thursday 17 May 2012 – Afternoon

GCSE COMPUTING

A451/01 Computer Systems and Programming

Candidates answer on the Question Paper.

OCR supplied materials:

None

Other materials required:

None

Duration: 1 hour 30 minutes



Candidate forename		Candidate surname	
--------------------	--	-------------------	--

Centre number							Candidate number				
---------------	--	--	--	--	--	--	------------------	--	--	--	--

INSTRUCTIONS TO CANDIDATES

- Write your name, centre number and candidate number in the boxes above. Please write clearly and in capital letters.
- Use black ink. HB pencil may be used for graphs and diagrams only.
- Answer **all** the questions.
- Read each question carefully. Make sure you know what you have to do before starting your answer.
- Write your answer to each question in the space provided. Additional paper may be used if necessary but you must clearly show your candidate number, centre number and question number(s).
- Do **not** write in the bar codes.

INFORMATION FOR CANDIDATES

- The number of marks is given in brackets [] at the end of each question or part question.
- The total number of marks for this paper is **80**.
- Your Quality of Written Communication is assessed in questions marked with an asterisk (*).
- This document consists of **16** pages. Any blank pages are indicated.

- 1 A tablet computer can be used to surf the Internet, read and reply to emails and watch on-line movies.



- (a) In the table below, tick **one** box in each row to show whether each of the following is an output device or not.

	is an output device	is not an output device
Screen		
USB Port		
Speaker		

[3]

- (b) A tablet computer has built-in input devices.

Identify **two** input devices that can be built into a tablet computer and for each state how it could be used to input data.

Device 1

How it could be used

.....

.....

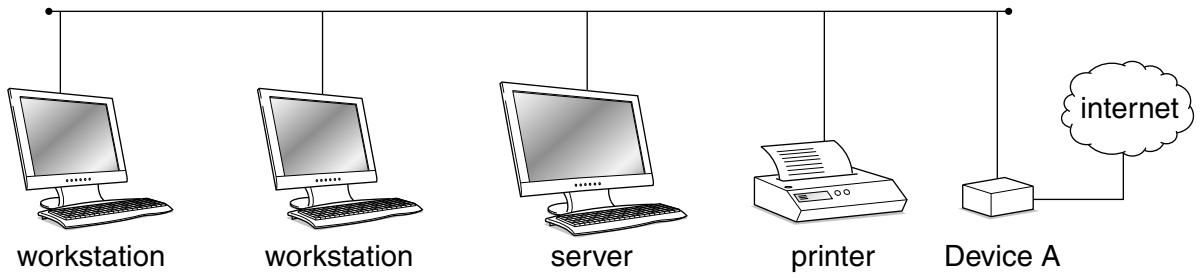
Device 2

How it could be used

.....

..... [4]

2 The following diagram shows how the computers in Mr Singh's office are connected to each other to form a LAN.



(a) State the correct name for this network topology.

..... [1]

(b) State the name of the Device A which connects the server to the internet.

..... [1]

(c) Give **three** functions of the server in this network.

1

.....

2

.....

3

..... [3]

(d) In his home, Mr Singh has a peer-to-peer network.

Explain what is meant by a peer-to-peer network.

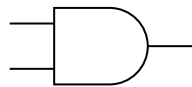
.....

.....

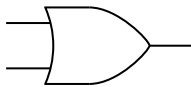
.....

..... [2]

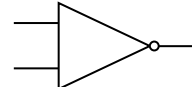
3 The following symbols are used to create logic circuits.



AND

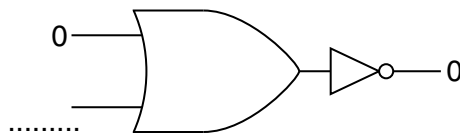
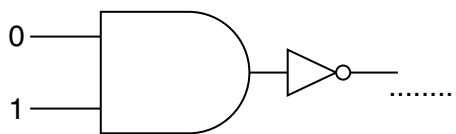
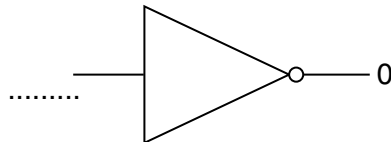
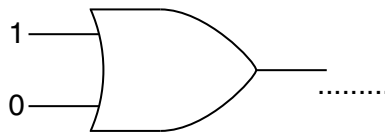
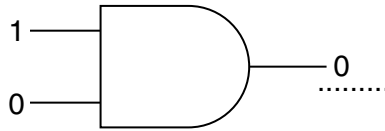


OR



NOT

Complete the following logic circuit by filling in the blanks. The first one has been done for you.



[4]

- 4 The table below shows different standard file formats that are used to transmit media files on the internet.

Tick **one** box in each row to show whether the format is used to transmit an image file, a sound file or a video file.

	image file	sound file	video file
AVI			
BMP			
JPG			
MP3			

[4]

- 5 Describe how the following system maintenance utilities are used.

System cleanup

.....

.....

.....

.....

Automatic update

.....

.....

.....

..... [4]

6 (a) Convert the denary number 55 to an 8 bit binary number.

.....
.....
.....
..... [2]

(b) Convert the denary number 55 to hexadecimal.

.....
.....
.....
..... [2]

7 The CPU is the component which does most of the data processing in a computer.

(a) State **two** tasks which are carried out by the CPU when processing data.

1

.....

2

..... [2]

(b) Explain how the clock speed and the cache size of a CPU affect its performance.

Clock speed

.....

.....

.....

.....

Cache size

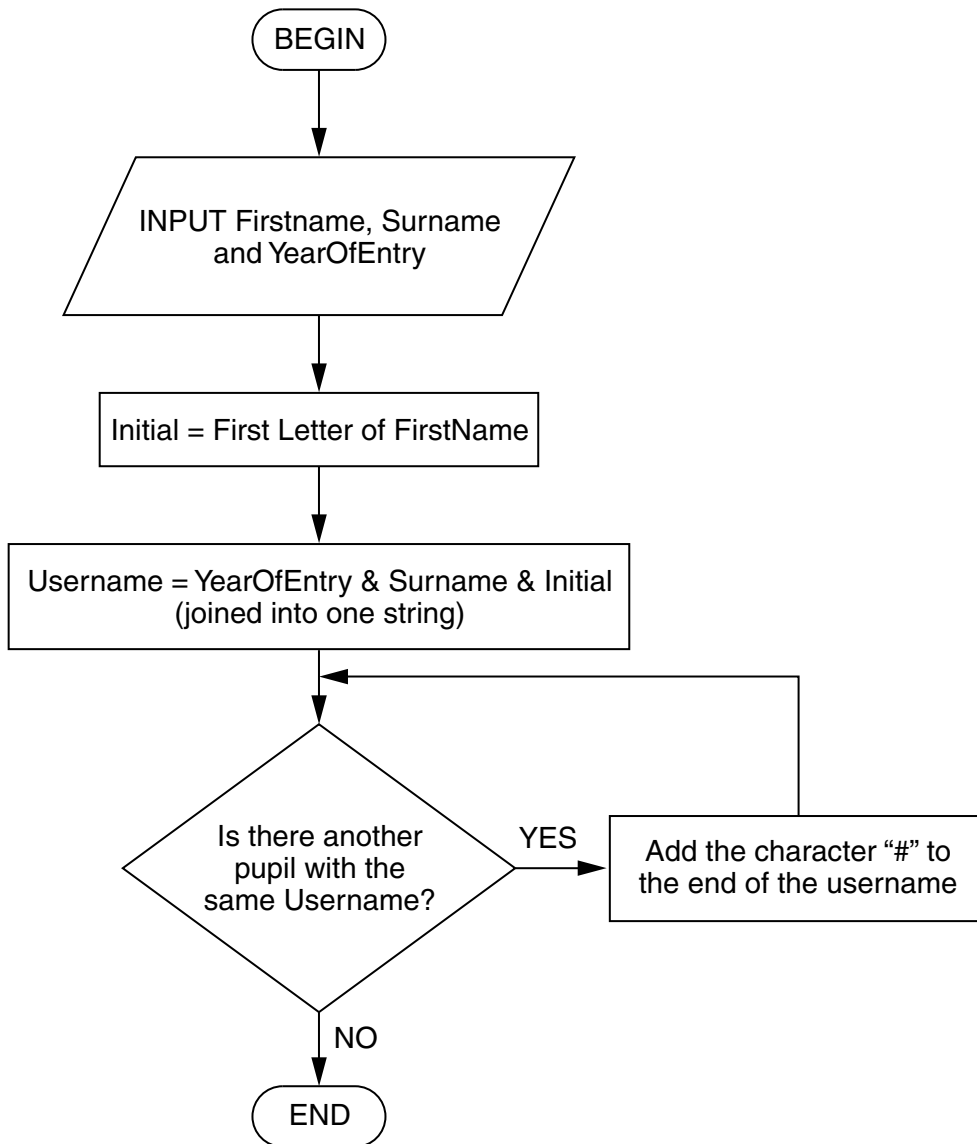
.....

.....

.....

..... [4]

- 8 A school uses a computer program to give every new pupil a username for logging onto computers. The algorithm used to choose the username is shown below.



- (a) Mark Johnson joins the school in 2012. No other pupil called Johnson joins the school in the same year.

State the username which Mark will be given and explain how you obtained your answer from the flow diagram.

Username

Explanation

.....

.....

..... [3]

(b) A pupil has the username 2010alim###.

State **four** facts that we can work out from this username.

1

.....

2

.....

3

.....

4

..... [4]

9 A DBMS is used to create customised data handling applications.

(a) State what the initials DBMS stand for.

..... [1]

(b)* Describe the features of a DBMS that can be used to create customised data handling applications and explain why using a DBMS is desirable.

The quality of written communication will be assessed in your answer to this question.

.....
.....
.....
.....
.....
.....
.....
.....
.....
.....
.....
.....
.....
.....
.....
.....
.....
.....
.....
.....
.....

..... [6]

10 The memory of a computer contains data and instructions in binary.

(a) Explain why computers use binary.

.....
.....
.....
..... [2]

(b) Describe how instructions are stored in binary.

.....
.....
.....
.....
.....
.....
..... [3]

11 A games developer is developing an online game that can be played on games consoles, desktop computers or mobile phones.

(a) The program is written in high-level code and then translated to machine code.

Describe **two** differences between high-level code and machine code.

1

.....

.....

.....

.....

2

.....

.....

.....

..... [4]

(b) One type of translator which can be used is an interpreter.

(i) Describe how an interpreter translates the high-level code to machine code.

.....

.....

.....

..... [2]

(ii) State the name of a **different type** of translator, other than an interpreter, which can be used to translate high-level code to machine code.

..... [1]

12 A taxi uses a computer to communicate with central office and to calculate customers' fares.

(a) The program in the computer uses sequence, selection and iteration.

State whether the operations below use **sequence**, **selection** or **iteration**.

Performing a series of different set-up operations when the computer is switched on.

.....

Beeping repeatedly after a message is sent, until the driver presses a button to show that the message has been read.

.....

Deciding whether to use the DayTimeRate or the EveningRate functions to calculate a customer's fare.

..... [3]

(b) The computer measures the distance travelled as a real number and then rounds it up to the next integer.

State what is meant by

a real number

.....

.....

an integer

.....

..... [2]

PLEASE DO NOT WRITE ON THIS PAGE



Copyright Information

OCR is committed to seeking permission to reproduce all third-party content that it uses in its assessment materials. OCR has attempted to identify and contact all copyright holders whose work is used in this paper. To avoid the issue of disclosure of answer-related information to candidates, all copyright acknowledgements are reproduced in the OCR Copyright Acknowledgements Booklet. This is produced for each series of examinations and is freely available to download from our public website (www.ocr.org.uk) after the live examination series.

If OCR has unwittingly failed to correctly acknowledge or clear any third-party content in this assessment material, OCR will be happy to correct its mistake at the earliest possible opportunity.

For queries or further information please contact the Copyright Team, First Floor, 9 Hills Road, Cambridge CB2 1GE.

OCR is part of the Cambridge Assessment Group; Cambridge Assessment is the brand name of University of Cambridge Local Examinations Syndicate (UCLES), which is itself a department of the University of Cambridge.