



General Certificate of Secondary Education  
Foundation Tier  
June 2014

# Geography (Specification A)

**90302F**

Unit 2 Human Geography

## Insert

A

Figure 5a

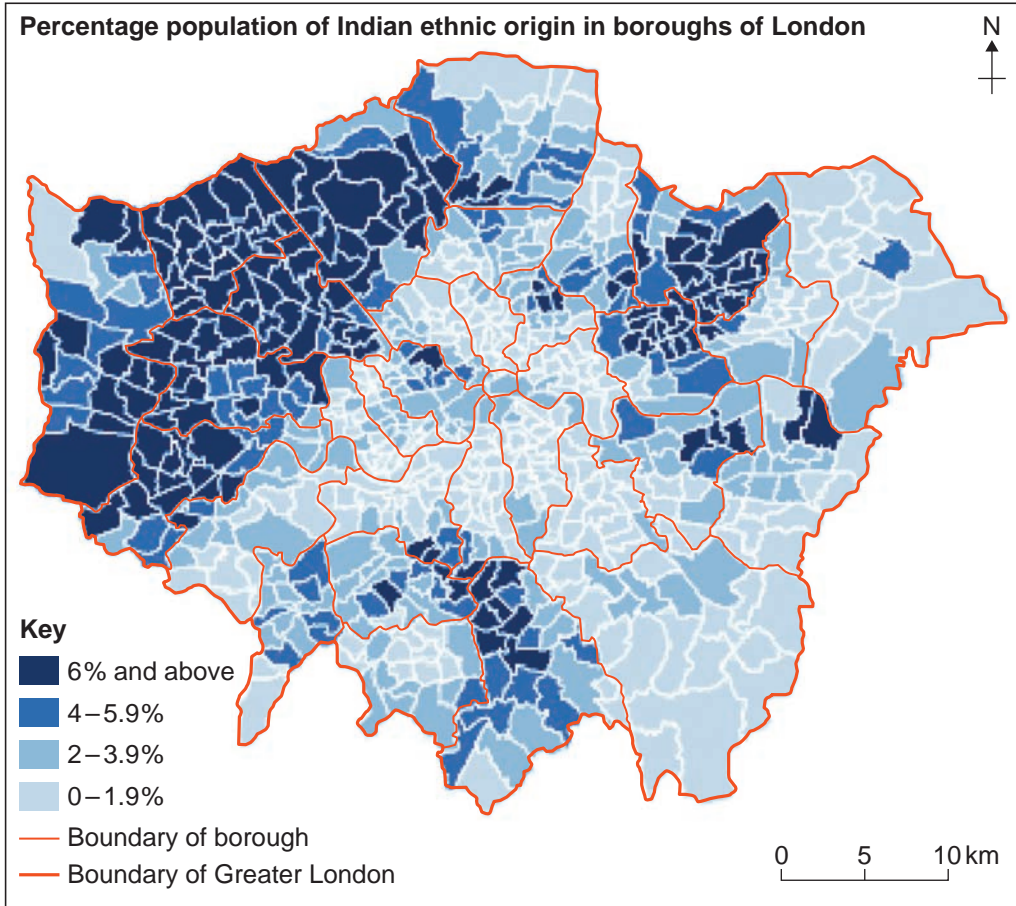


Figure 5b

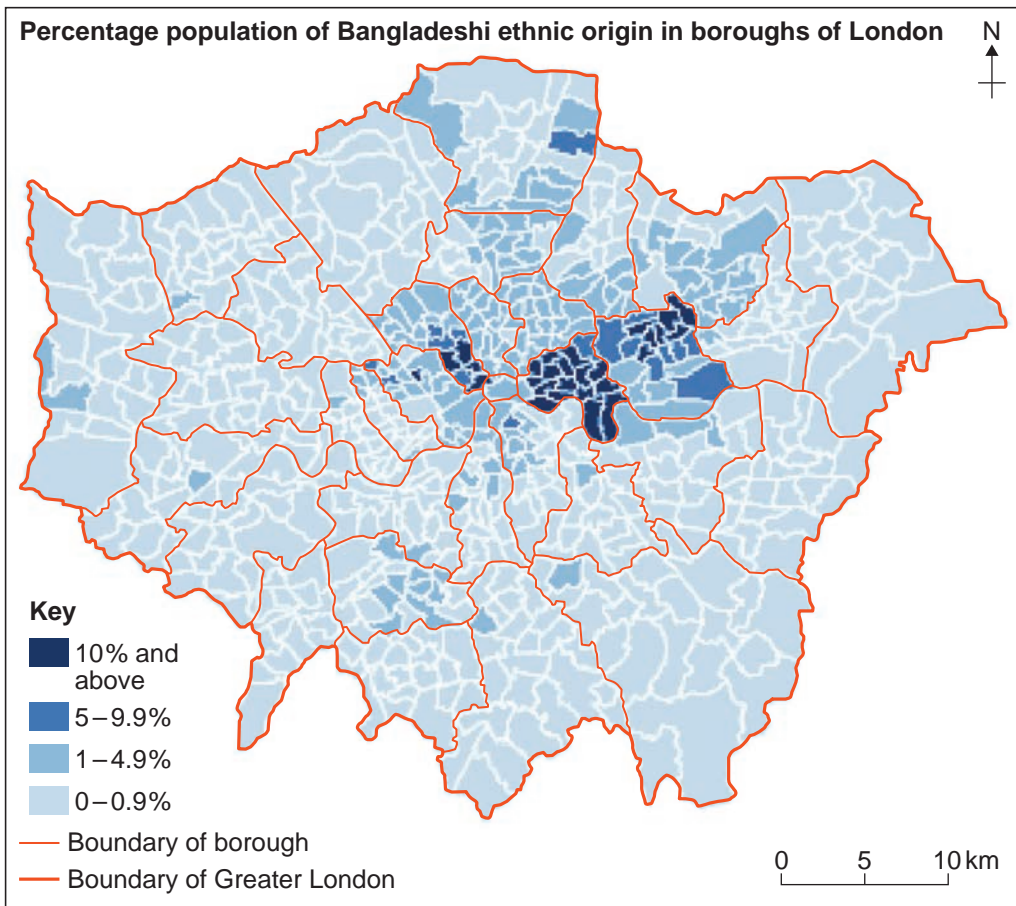


Figure 5c



Figure 6



Figure 7

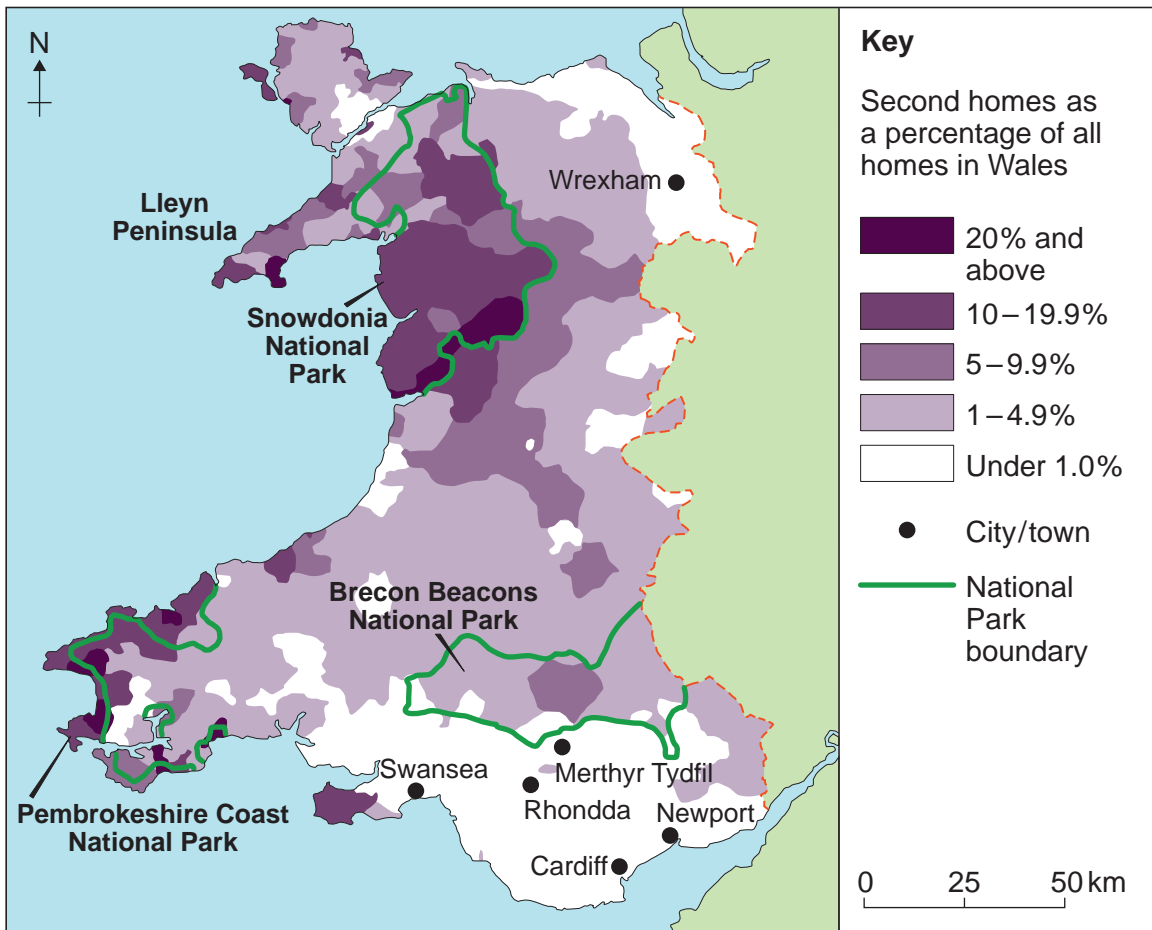


Figure 10a

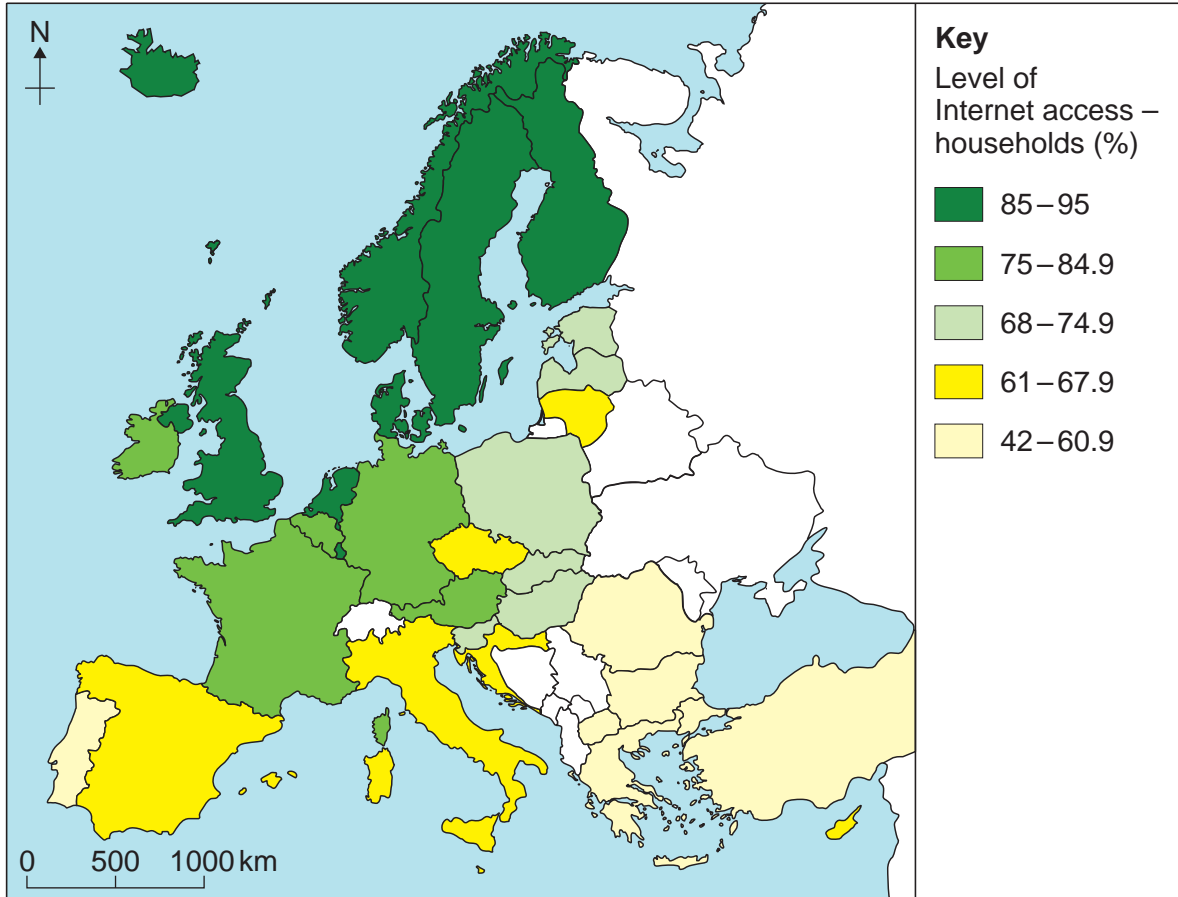


Figure 10b

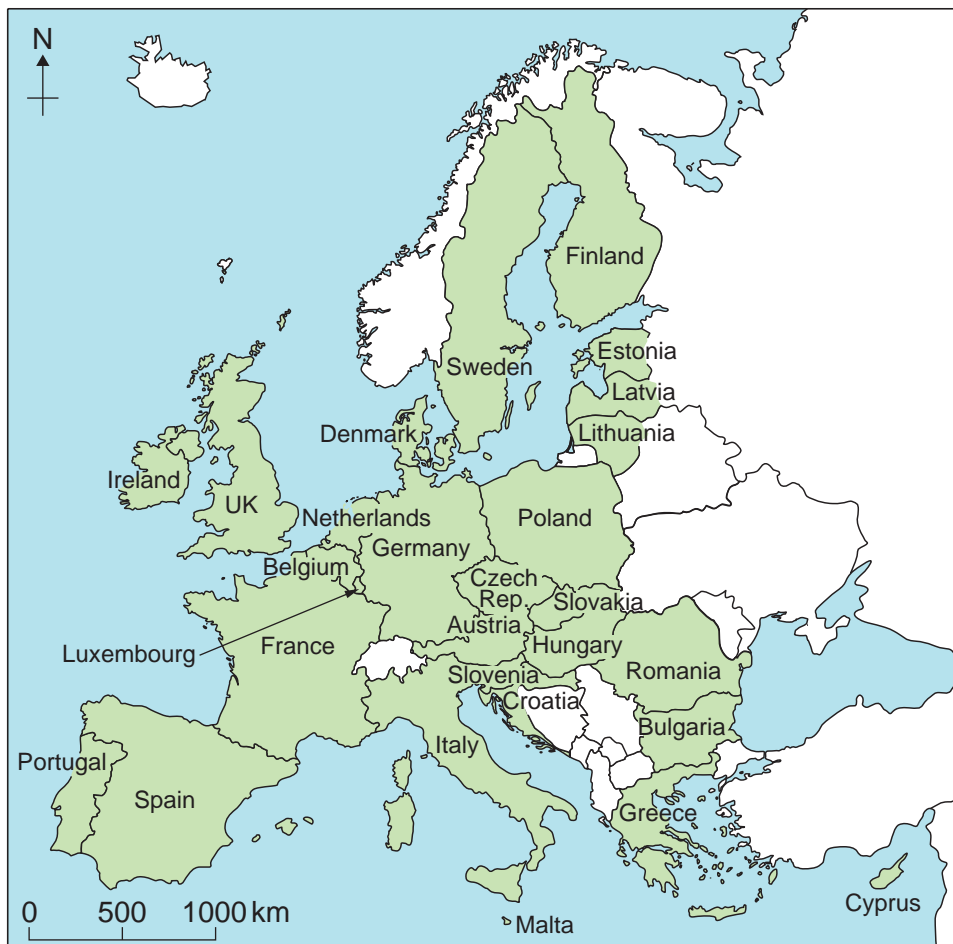


Figure 12



Figure 13

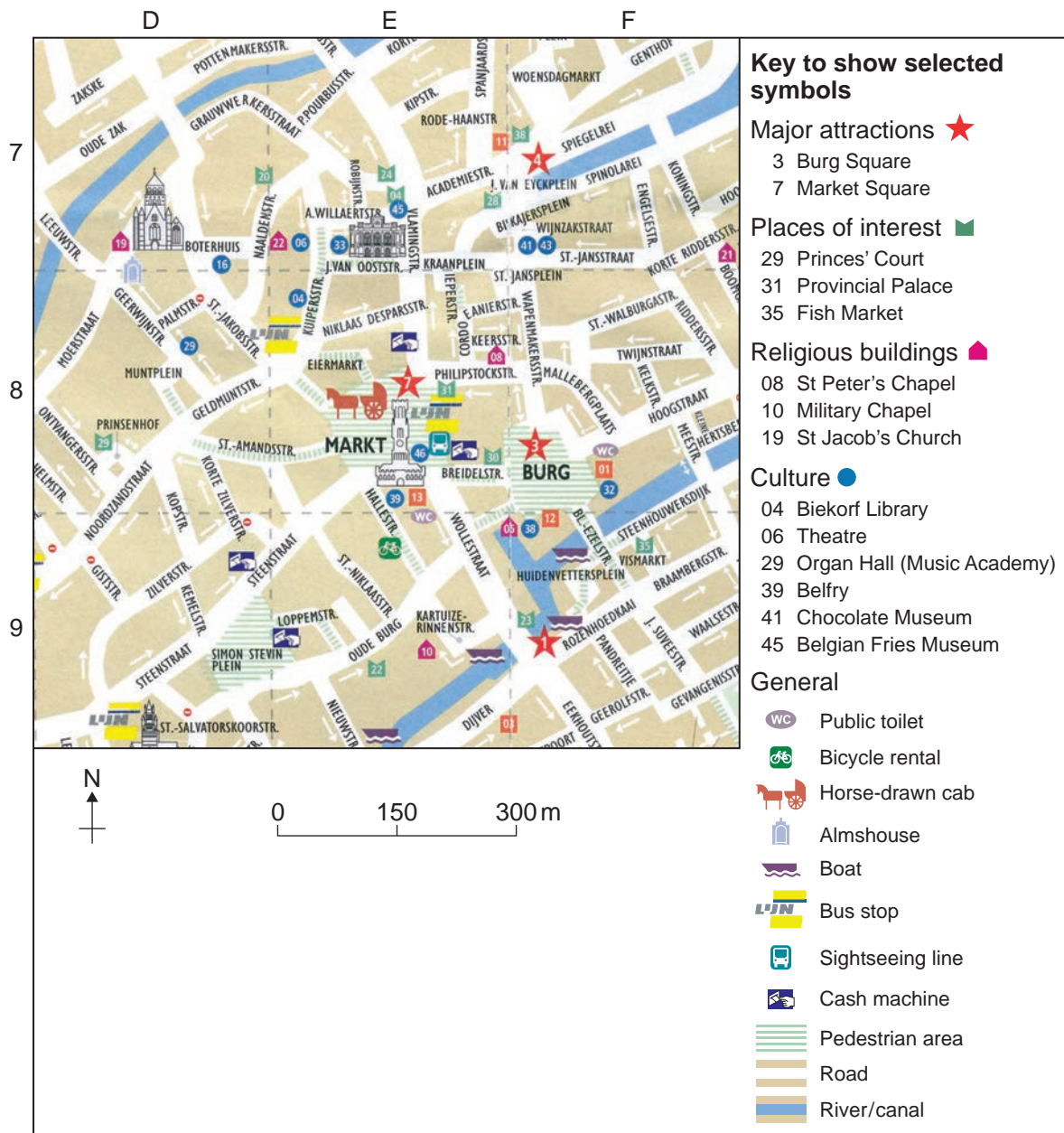




Figure 15



**There is no resource material printed on this page**

**There is no resource material printed on this page**

---

**There is no resource material printed on this page**

**Acknowledgement of copyright-holders and publishers**

Permission to reproduce all copyright material has been applied for. In some cases, efforts to contact copyright-holders have been unsuccessful and AQA will be happy to rectify any omissions of acknowledgements in future papers if notified.

Figures 5a, 5b, 5c: Copyright Guardian News & Media Ltd 2013  
Figure 6: P Woodhouse  
Figure 7 (map): Michael Raw, Exam Revision Notes AS/A level Geography  
Philip Allan Updates, 2009, Reproduced by permission of Philip Allan Updates  
Figure 10a: © European Union, 1995–2013  
Figure 12: Getty Images, Michael D Kock  
Figure 13: © Toerisme Brugge – Stad Brugge  
Figure 15: S Wheeler

Copyright © 2014 AQA and its licensors. All rights reserved.